

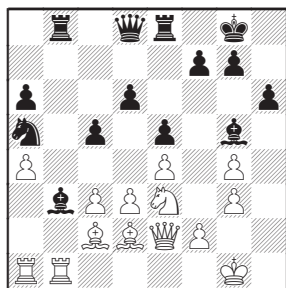


# WOMEN'S WORLD CHESS CHAMPIONSHIP

NALCHIK 2008

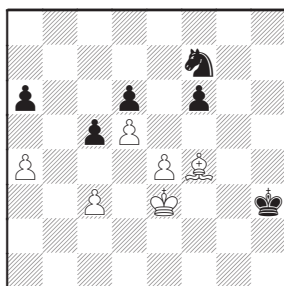


8.a4 ♖d7 9.c3 0-0 10.♖bd2 ♖a5  
11.♖c2 c5 12.♗e1 ♗e8 13.♖f1 h6  
14.h3 ♖f8 15.♖e3 ♖c6 16.♖h2  
♖e6 17.♖hg4 ♖xg4 18.hxg4 b4  
19.♗f3 ♗b8 20.♖d2 ♖e7 21.g3  
♖g5 22.♗e2 bxc3 23.bxc3 ♖a5 24.  
♗eb1 ♖b3



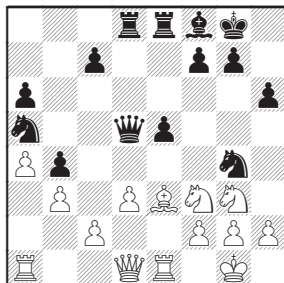
25.♗d1 ♖xe3 26.♖xe3 ♖xc2 27.  
♗xc2 ♗d7 28.♗xb8 ♗xb8 29.♗b1  
♗xb1+ 30.♗xb1 ♗b7 31.♗xb7  
♖xb7 32.♖f1 f6 33.♖e2 ♖f7 34.  
d4 ♖e6 35.d5+ ♖d7 36.♖d3 ♖a5

37.f3 ♖c7 38.♖f2 ♖b6 39.♖e3  
♖b7 40.♖c4 ♖d8 41.f4 ♖f7 42.  
♖b3 exf4 43.gxf4 g5 44.♖d2 gxf4  
45.♖xf4 ♖c7 46.♖c2 ♖d7 47.♖d2  
♖e7 48.♖e2 ♖f8 49.♖f2 ♖g7 50.  
♖g2 ♖g6 51.♖f2 ♖e5 52.♖g3  
♖c4 53.♖f3 h5 54.gxh5+ ♖xh5  
55.♖h2 ♖g6 56.♖e2 ♖g5 57.♖d3  
♖e5+ 58.♖e2 ♖g4 59.♖e3 ♖f7  
60.♖f4 ♖h3



61.♖xd6 ♖xd6 62.♖f4 ♖g2 63.  
e5 fxe5+ 64.♖xe5 ♖b7 65.d6  
♖f3 66.♖d5 ♖e3 67.♖c6 ♖xd6  
68.♖xd6 c4 69.♖c5 ♖d3 70.♖b4  
a5+ 71.♖xa5 ♖xc3 72.♖b6 1/2

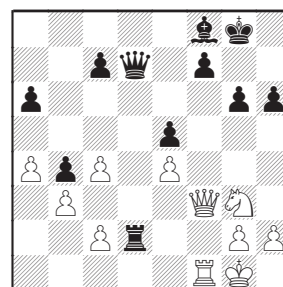
**C84** ♖ KOSINTSEVA, T 2511  
♗ KOSTENIUK 2510  
1.e4 e5 2.♖f3 ♖c6 3.♖b5 a6 4.  
♖a4 ♖f6 5.0-0 ♖e7 6.d3 b5 7.  
♖b3 0-0 8.a4 ♖b7 9.♗e1 ♗e8 10.  
♖bd2 ♖f8 11.♖f1 ♖a5 12.♖a2 d5  
13.♖g3 h6 14.♖d2 b4 15.exd5  
♖xd5 16.♖xd5 ♗xd5 17.b3 ♗ad8  
18.♖e3 ♖g4



19.♖d2 ♖xe3 20.fxe3 ♗e6 21.♗f3



g6 22.e4 ♗c6 23.♗f1 ♗d7 24.♗g4  
♗e6 25.♖c4 ♖xc4 26.dxc4 ♗d2  
27.♗f3 ♗f6 28.♗af1 ♗xf3 29.♗xf3  
♗d7



30.h3 ♗xc2 31.♗d1 ♖c5+ 32.♖h2  
♗d2 33.♗xd2 ♗xd2 34.♖e2 ♖e3  
35.h4 h5 36.g3 ♗d3 37.g4 ♗xb3  
38.♖g2 hxg4 39.♗xg4 ♗xc4 40.  
h5 ♖g7 41.♖g3 ♗c2+ 42.♖h3  
♖f4 43.hxg6 ♗d3 44.gxf7+ ♖xf7  
45.♗h5+ ♖e7 46.♗h4+ ♖d7 47.  
♗g4+ ♖c6 0-1

By GM Vladimir BELOV

## THE ROUND THREE REVIEW

There were lots of interesting encounters in the third round but none of them could be compared with the match between Kosteniuk and younger Kosintseva. It had intrigue and curiosity being a classic example of concurrence in Russian women chess. The ratings of both players recently equalized and this match had to show who the national leader is.

The first game did not provide the public with clear reply...

**C95** □ KOSTENIUK 2510  
 ■ KOSINTSEVA, T 2511  
**1.e4 e5 2.♘f3 ♘c6 3.♙b5 a6 4.♙a4 ♗f6 5.0-0 ♙e7 6.♞e1 b5 7.♙b3 d6** (Black leads the game into the classical Spanish positions) **8.c3 0-0 9.h3 ♗b8**. The set-up called after Breyer. **10.d4 ♗bd7 11.♗bd2 ♙b7 12.♙c2** (White is preparing the planned transfer of the knight to the king's side) **12...♞e8 13.♗f1 ♙f8 14.♗g3 g6**. The forces are set-up due to the theory and here White has to choose between two principally different plans.

**15.a4** (another opportunity is 15.b3 with the idea of making a strong pawn center with d4-d5, c3-c4) **15...c5**. 15...c6 has been played too. Black does not hurry to open the cards, aiming to place the pieces better first.

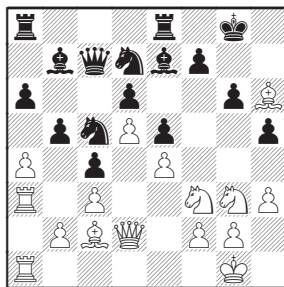
**16.d5 c4** (Black pieces need some "fresh air", White was ready to make preventing b2-b3 move) **17.♙g5 h6 18.♙e3**. With this bishop maneuver White has weakened the king's side of the opponent which should normally be the main field of the battle.

**18...♗c5 19.♞d2 h5 20.♞a3**. While studying the games

played in this line one can notice that White's play on the queen's side is usually used to distract the opponent from the main "hot spot" on the board. This game enlarged the amount of such examples... I do not believe that by playing 20. ♙xc5 dxc5 21.♙d1 ♞e7 22.♙e2 ♗e8 23.♞e3 ♞c8 24.axb5 axb5 25.♞a7 ♗d6 26.♞a1 (Volokitin – Harikrishna, Dagomys 2008) White can reach the advantage though this game ended to White's favor.

**20...♗fd7 21.♞a1 ♞c7**. Kramnik used a different approach in his game against Shirov in Monaco 2002: 21...♙g7 22.♙g5 ♙f6 23.♙h6 ♞e7 24.♞c1 ♗b6 25.axb5 axb5 26.♞a5 ♞d7 27.♙g5 ♙g7 28.♙h6 ♙f6 29.♙g5 ♙g7 30.♙h6 with a draw. It is great that such a boring scenario did not work out in this game.

**22.♙h6 ♙e7**.

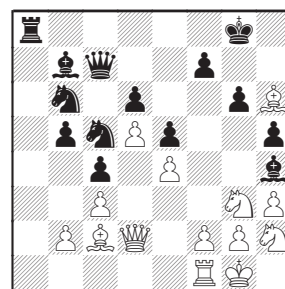


**23.♞f1!?** I am not sure that this maneuver is in fact that strong but it was proved to be practically important in the game. Aleksandra is showing her intension of attacking the king with the help of typical f2-f4 break-through.

**23...♗b6 24.axb5 axb5 25.♞xa8 ♞xa8** (after 25...♙xa8 White can change the plan and struggle for the only open file) **26.♗h2 ♙h4?** Tatjana is provoking the opponent for the sacrifice

considering the position being not that dangerous.

Knowing what happened in the game one can easily give an advice of playing more accurate: 26...h4!? 27.♗e2 ♗bd7 28.f4 ♞b6 29.♙h1 ♞a2 and Black has counter play.



**27.♗xh5!** Strong and right in time! Black pieces lack coordination and are situated far from the king's side which helps White to create a great attack.

**27...gxh5 28.♞e2**. 28.♙g5!? does not provide White with anything more than a draw. For example: 28...♙xg5 29.♞xg5+ ♙f8 30.f4 ♗bd7 (30...exf4!? 31.♞xf4 ♙e8 32.♗f3 ♞e7) 31.♞xh5 ♙e7 32.fxe5 ♗xe5 33.♗g4 ♞f8 34.♞h4+ ♙d7 35.♞h6 ♞d8 36.♗xe5+ dxe5 37.♞f6 ♙c8 38.♞c6+! ♙xc6 39.♞xc6+ ♞c7 40.♞a8+ ♞b8 41.♞c6+ ♞c7 and the position is equal.

**28...f6**. Another crucial moment. Black is facing only one problem: how to defend? I tried different ways of consolidation but also could not find the clear way to equalize for Black. White's attack is constantly growing: 28...♞e7 29.♞xh5 ♙c8 30.f4 ♙g3 31.♗f3 ♙xf4 32.♙xf4 exf4 33.♗g5 f6 34.♞xf4! ♞a1+ 35.♙h2 ♙d7 36.♗e6! ♗xe6 37.dxe6 ♙xe6 38.♞f3 or 28...♙f6 29.♞xh5 ♙c8 30.f4 ♗d3 31.♙xd3 cxd3 32.fxe5 ♙xe5 33.♞g5+ ♙h8 34.♗f3 f5 35.♞h5.



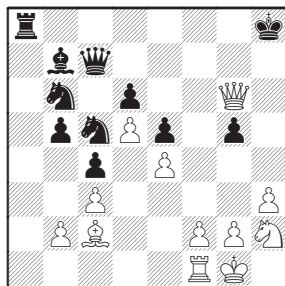
# WOMEN'S WORLD CHESS CHAMPIONSHIP

NALCHIK 2008



Maybe Black could find a way to defend the position in a better way but for this one needs to make really deep analyses which is of course impossible to do at the board.

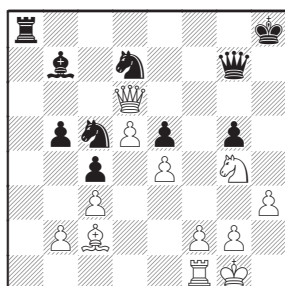
**29. ♖xh5 ♙g5 30. ♖g6+ ♙h8 31. ♙xg5 fxg5.**



**32. ♖h6+?** Aleksandra aims to return the material as quick as possible but this hurrying attitude gives Black its time to set-up her pieces in a right way and protect all the weaknesses.

The strength of the queen + knight tandem is well-known. Here it could be proved once again: **32. ♘g4! ♖g7 33. ♖h5+! ♖h7 (33... ♙g8 34. ♘h6+ ♙f8 35. h4!) 34. ♖xg5 ♘bd7 35. ♘f6 ♘xf6 36. ♖xf6+ ♖g7 37. ♖xd6** – and White has too many pawns...

**32... ♖h7 33. ♖xd6 ♘bd7 34. ♘g4 ♖g7.**

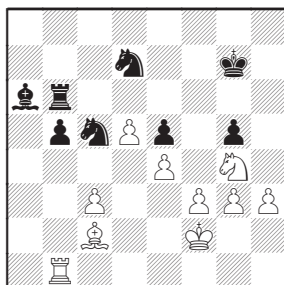


**35. ♖b1!** It would be very useful to exchange the dangerous c4 pawn. White's passive bishop and rook would also find their ways for active play then.

**35... ♙h7 36. ♖c7 ♖h8 37. b4! cxb3 38. ♙xb3 (38. ♖xb3!? ♙a6 39. ♖a3) 38... ♖b8 39. ♖xb8 ♖xb8 40. ♙c2 ♙a6 41.**

**g3 ♙g7 42. f3 ♘b7 43. ♙d3 ♘bc5 44. ♙c2.** The chances of both sides are nearly equal. This is proved by formal material equality (three pawns for a piece) and the variations. Still there is almost no way for a game to end in a draw.

**44... ♖b6 45. ♙f2.**

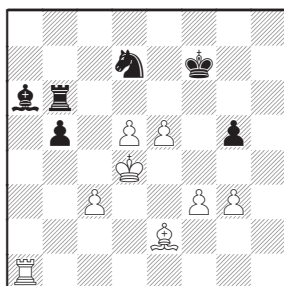


**45... ♘a4?** There is no need to go deep into details here, one word is enough: it's a blunder...

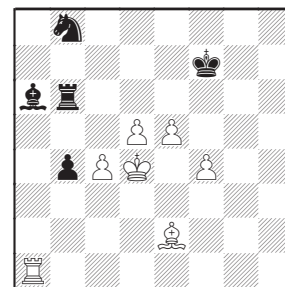
**46. ♘xe5! ♘xe5 47. ♙xa4 ♖h6?!** In case of more persistent **47... ♘xf3 48. ♙xf3 ♖f6+ 49. ♙e3 bxa4 50. ♖b4 ♙c8 51. ♖xa4 ♙xh3 52. c4 ♖f1** White would also be winning but with some technical difficulties.

**48. ♙d1?** Why not **48. ♙xb5 ♖b6 49. c4** with easy win? Though, it is not the last time to ask "why" in this game. One can see that the tension of the game is very strong...

**48... ♖xh3 49. ♖a1 ♖h6?** (it is unclear how White was going to improve the position after **49... ♖h1!**) **50. ♙e2 ♖b6 51. ♙e3 ♙f7 52. ♙d4 ♘d7 53. e5.** And again it is easy to assess the position – sooner or later (probably sooner) the massive attack of White pawns would reach its purpose.



**53... ♘b8 54. f4 gxf4 55. gxf4 b4 56. e6+?!** It is the start of some strange operation. A lot of continuations win for White, the most logical of them is **56. c4**



Four passed pawns in the center is a dangerous force!

**56... ♙e7 57. ♙xa6** (it was not late to return to **57. c4**) **57... ♘xa6 58. cxb4?** Any struggle could be finished with simple **58. ♙e5**, not letting Black to put the blockade of the pawns into its effect: **58... b3 59. ♖h1** and so on. The most surprising is that Osteniuk still had about 15 minutes at the clock whereas Sosintseva was in a horrible time-trouble. «I cannot say why, but in this moment I felt very nervous, actually as I was feeling the whole game...» – Aleksandra would say later at the press-conference.

**58... ♙d6!** This recourse was probably missed by White. The strength of pawns dramatically disappeared and the draw becomes obvious:

**59. e7 ♙xe7 60. ♖e1+ ♙d7 61. f5 ♘xb4 62. ♖h1 ♖d6 63. ♖h7+ ♙d8 64. ♙e4.** Draw.

...

Before the start of the tournament, considering how many representatives of China are participating, one could worry that the World Championship would soon become the competition of only players from this country (with few exceptions). But if in the first round only one player from the